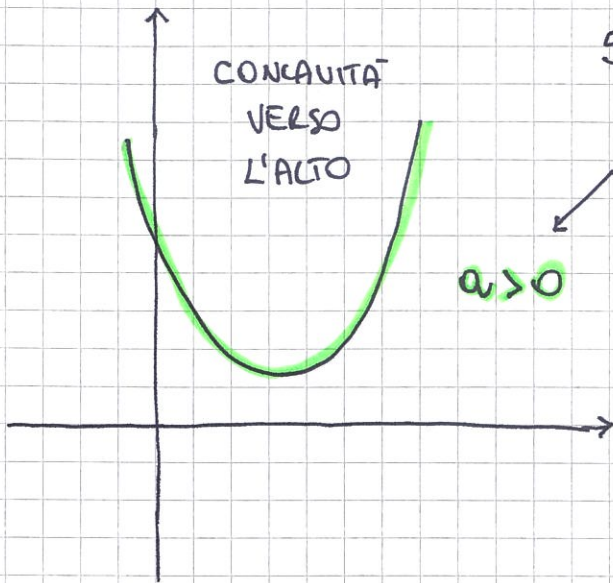
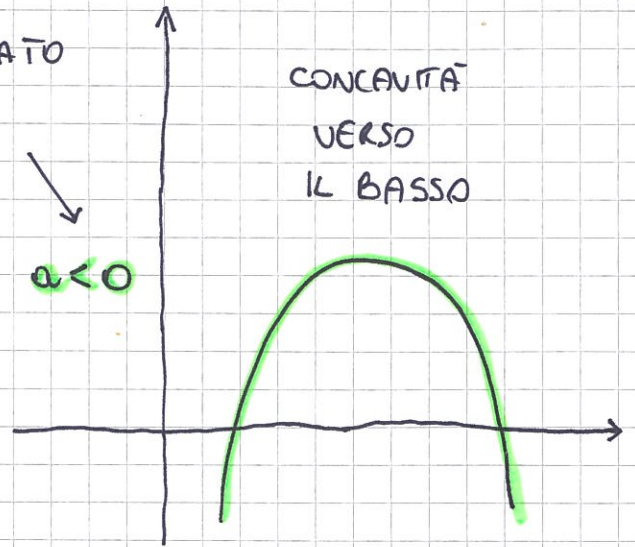


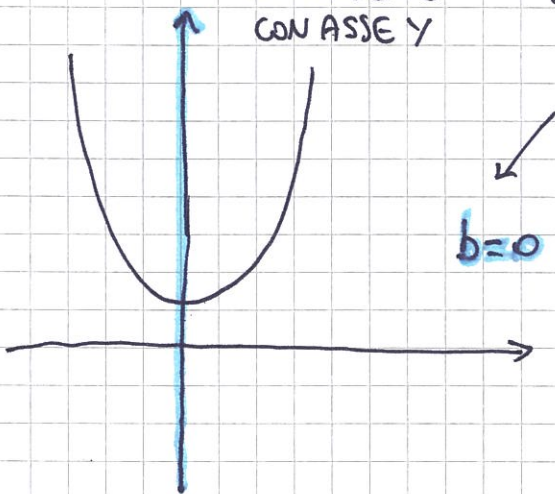
FORMULARIO PARABOLA



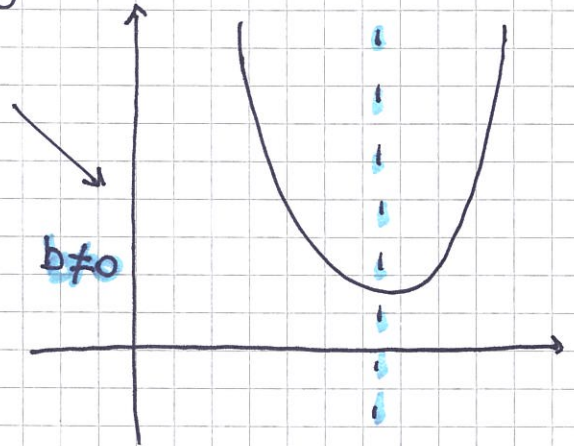
SIGNIFICATO DI a



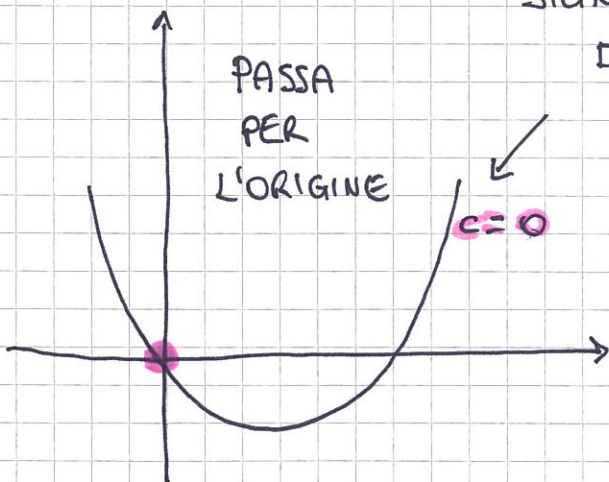
ASSE COINCIDENTE CON ASSE Y



SIGNIFICATO DI b



SIGNIFICATO DI c



$c \neq 0$



- PASSAGGIO PARABOLA PER 2 PUNTI NOTO L'ASSE

- PASSAGGIO PARABOLA PER 2 PUNTI DI CUI UNO È IL VERTICE

- 1) IMPONGO IL PASSAGGIO PER 1 PUNTI E USO $x = -\frac{b}{2a}$ O $x_v = -\frac{b}{2a}$
- 2) RISOLVO CON CRAMER